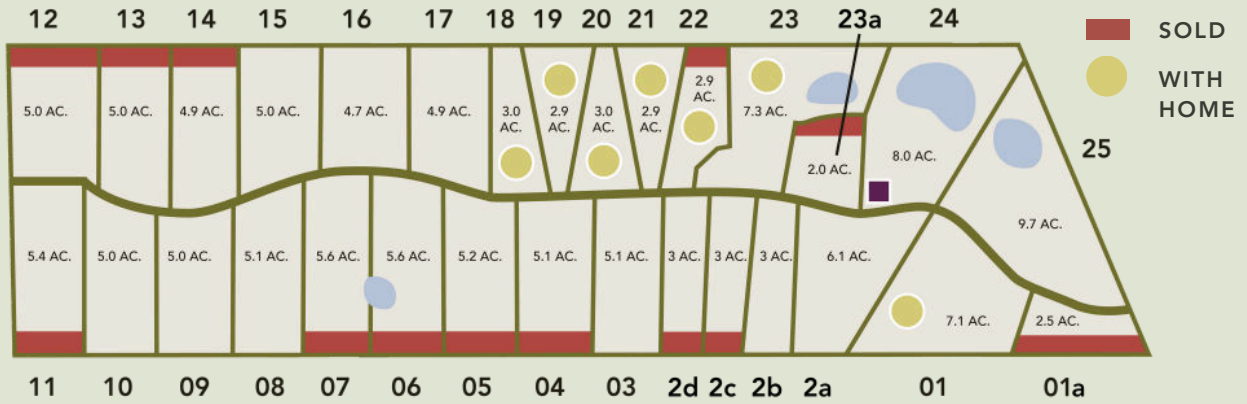




TREE TOPS LAND AVAILABILITY AND PRICING

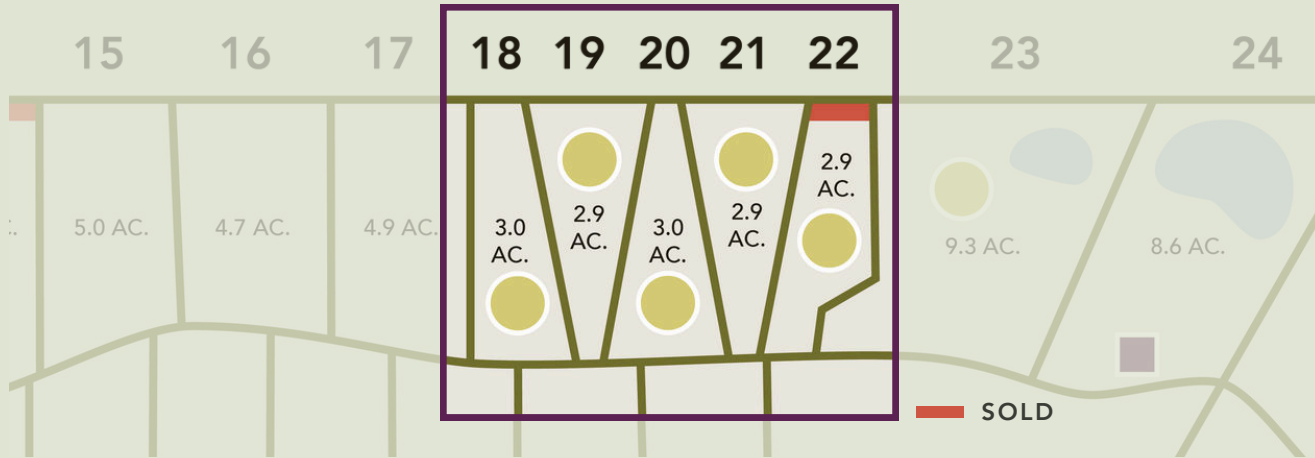
1120 W FUCHS RD CARMINE, TX 78932



Lot #	Acreage	Price
1	7.1	\$995,000 *with home
1a	2.5	SOLD
2a	6.1	\$349,000
2b	3.0	\$199,999
2c	3.0	SOLD
2d	3.0	SOLD
3	5.1	\$399,000
4	5.1	SOLD
5	5.2	SOLD
6	5.6	SOLD
7	5.6	SOLD
8	5.1	\$399,000
9	5.0	\$399,000
10	5.0	\$399,000
11	5.4	SOLD
12	5.0	SOLD
13	5.0	SOLD
14	4.9	SOLD
15	5.0	\$399,000
16	4.7	\$399,000
17	4.9	\$399,000
18-22	Hacienda Grove (See Reverse)	
23	7.3	\$995,000 *with home
23a	2.0	SOLD
24	8.0	\$760,000
25	9.7	\$822,885



HACIENDA GROVE



Introducing Hacienda Grove Round Top, featuring clusters of modern haciendas curated by Starred Sky Development. Every Hacienda Grove community is design-forward and redefines modern living.

Carefully considered homesites ensure that each land parcel is low-impact and complements the natural rolling hills, views, and sunlight. Every detail has been carefully considered to pay homage to the land's vast Texas history.

Lot #	Acreage	Home Model	Price
18	3.0	Lampasas 3 3	\$749,000
19	2.9	Colorado River 3 3	\$749,000
20	3.0	Studio Z	\$599,000
21	2.9	Colorado River 2 2	\$599,000
22	2.9	Standard C	SOLD

+The acreage information is deemed reliable but not guaranteed. We recommend buyers confirm the acreage with a professional survey before purchase.

*For information and pricing for properties that include homes, please contact us for for more details.

979.300.6834 | sales@haciendagrove.com



COPYRIGHT © 2024, HOUSTON REALTORS INFORMATION SERVICE, INC. ALL INFORMATION PROVIDED IS DEEMED RELIABLE BUT IS NOT GUARANTEED AND SHOULD BE INDEPENDENTLY VERIFIED.